

# PREET HORNETT 4X4



THE FULLY LOADED **PREET** BACKHOE LOADER  
WITH THE MOST FUEL EFFICIENT PERFORMANCE.



# INTRODUCING THE NEW GENERATION BACKHOE LOADER

## PREET HORNETT 4X4



### FEATURES & WARRANTY

New Generation Backhoe loader from Preet that embody Preet's commitment to excellence in engineering and manufacturing Powering them with powerful engine of KOEL (Kirloskar) provides world-class performance and complies with all relevant environmental regulations.

Its low fuel consumption and maintenance costs make operating the backhoe loaders even more attractive comfort and excellent visibility with tinted safety glass. The front and side control panels are all equipped with the latest technology to guide the operator. Equipped with systems to improve performance and productivity, these backhoe loader are an ideal combination of concentrated power, safety and extreme user-friendliness.

### POWERED WITH UNMATCHED PERFORMANCE & HIGH PRODUCTIVITY



**PROVEN DESIGN WITH  
LONG LIFE STRUCTURE**



**BETTER EFFICIENCY &  
PRODUCTIVITY**



**HIGH PERFORMANCE &  
RELIABLE HYD. SYSTEM**



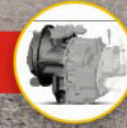
**PROVEN  
POWERTRAIN**



**WIDE RANGE VISIBILITY, COVERED  
WITH ROPS/ FOPS & COMFORT**



**FUEL SAVER WITH  
HIGH PERFORMANCE**





## SPECIFICATIONS

ENGINE	
Environment Friendly Complies with BS-III/BS-IV & CEV norms with high torque, fuel efficient and long Life Performance.	
<b>MODEL :</b>	<b>4R1040 Ta2</b>
Type	4- Stroke, Direction Injection, Turbocharged, water Cooled, Diesel Engine
Cylinders	4 Cylinder
Bore/stroke :	105 mm x 120 mm
Displacement :	4156 cc
Fuel Injection	Inline Pump
Fuel :	Diesel
Fuel Filter	1.1 lit. dual bowl filter
Cooling :	Liquid with 6.5± 0.5 Ltrs, capacity
Engine Rated Speed	2200 rpm
Low Idle	900 ± 50 rpm
High Idle Speed	2400 ± 50
Rated Horsepower Gross	96 hp ( 70.06 kw)
Max Torque @ 1500 rpm	377 @ 1400 ±100
Radiator :	Core size are 3972 cm2
Water Pump Style :	Integral
Oil Filtration :	Replaceable, Full- Flow Spin-On
POWER TRAIN	
<b>CARRARO TRANSMISSION</b> with Synchro shuttle & Different gear options with 4 speed (4 F & 4 R ) Manual power shift Transmission, Electrically actuated with twist Grip.	
Transmission Standard	4F -2R Manual Power shift Transmissio, Electrically actuated with twist grip.
Gear Ratios	1st F-1 : 5.491      1st R-1 : 4.55 2nd F-1 : 3.043      2nd R-1 : 2.522 3rd F-1 : 1.584      3rd R-1 : 1.313 4th F-1 : 0.793      4th R-1 : 0.657
AXLE	
Drive Front Axle	Carraro make Front Axle Drive with Equal turn, power steering, hydraulic supply from independent steering pump drive & high oscillation angle.
Rear Axle	Carraro make Rigidly mounted wit Max torque proportioning differential, driven by short propler shaft from gear box.

## FUEL SAVER WITH EXTRA POWER EVER

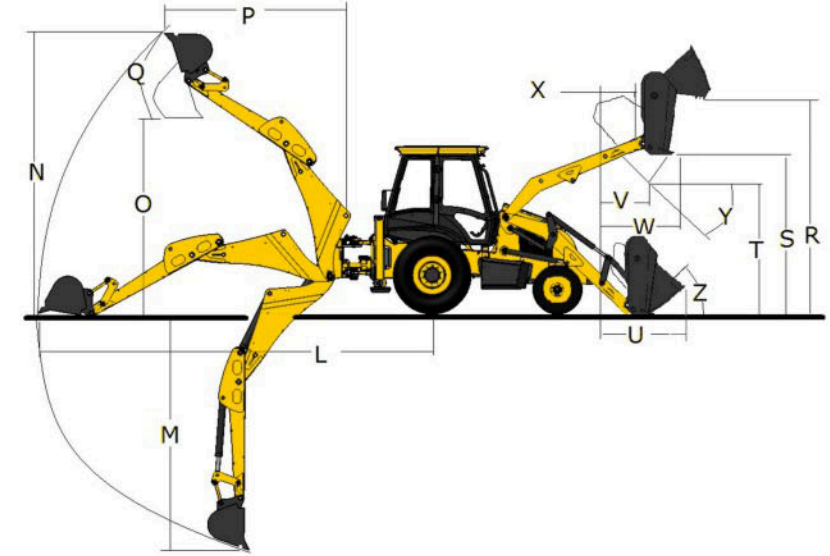
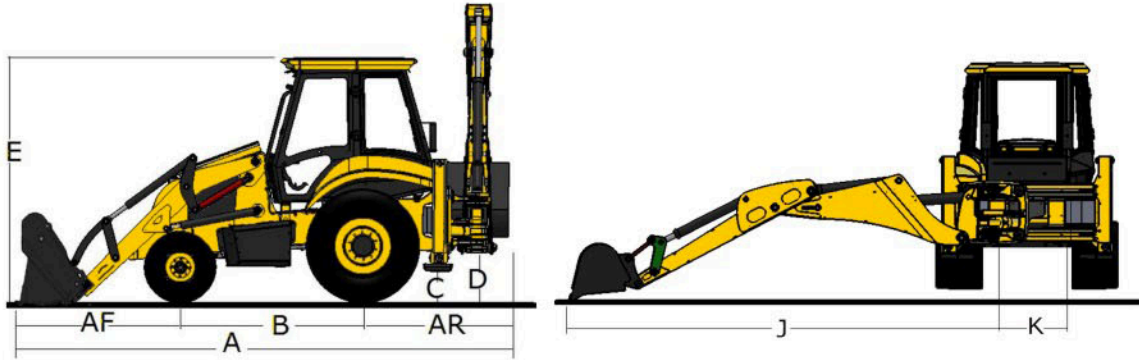
BRAKE	
Service Type :	Brake with Hyd. Actuated, Dual line oil immersed multi disc type wet brakes on the rear axle operated & two independently operate able foot padels, joined together for normal operation.
Parking Type :	Axle Mounted Spring Applied Hydraulic Release (SAHR)
ELECTRICAL	
Battery	130 Amph/12 volts with full road lighting, horn & reverse alarm, water & dust proof electrical connection.
Alternator Output	95 amp
HYDRAULICS	
Type	Open Center Hydraulics
Pump Type	Tendom Pump
Maximum Pump Capacity	56 cc (121 ltrs @2200 rpm)
System Pressure	270 Bar
STEERING	
Type	Front wheel power steering with Equal turn, hydraulic supply from independent steering pump
TURNING CIRCLE	
Out side front wheels (mtr) (without brake)	8.5 mtr.
Outside widest loader bucket (mtr) (without brake)	12 mtr.
Outside front wheels (mtr) (with brake)	6.7 mtr.
Outside widest loader bucket (mtr) (with brake)	9.8 mtr.
TYRE	
Standard (Traction/ Industrial ) Optional (Heady Duty/HD)	
Front	12.5 x 80/18 20 PR
Rear	14 :25 x 25 -20 PR HD /16.9 x 28 -12 PR
SHIPPING WEIGHT	
Weight	7845 kgs Approx.

SPEED		
Gear	Forward km/hr	Reverse km/hr
1st	5.3	4.6
2nd	8.5	7
3rd	18.5	Not Recommended
4th	36.6	Not Recommended
( Above is with standard tyres )		
SERVICE		
Hydraulic System (Oil)	125 Ltrs.	
Fuel Tank	150 Ltrs.	
Engine Coolant	16 Ltrs.	
Engine Oil	9.5 Ltrs.	
Transmission	14.5 Ltrs.	
Rear Axle	18 Ltrs.	
Front Axle	12 Ltrs.	
CABIN		
Ergonomically designs cabin with contemporary styling. Tinted cab glasses provide better visibility and sun protection Day & night time visibility, Rear View mirror. LED Worklamp on Front & Rear End side for better night time visibility and safty, Cab provide easy walk through with two door access. Features include like: Fully adjustable premium operator seat with safty belt, Large convex rear view mirror in the cabin, interior light, front screen wiper, cabin fan, front & rear horn, Water bottel holder. Music system with FM, MP 3 with Blue tooth player & First aid kit.		
OPTIONAL FEATURES		
Tele matic GPS SYSTEM (Global Positioning System)		
Hydraulic Rock breaker only conection couplimg and pipe attchment		
Heay duty Tyres (HD Tyre)		
AC Cabin		
OPTIONAL ATTACHMENTS		
6 in 1 loader bucket	1.1 CuM.	
Excavator bucket with capacity	0.12 CuM., 0.30 CuM.	

Preet makes continuous improvements to all its products & reserved the right to change spcification without any notice. Photo and illustrations may contain standard and optional equipment.

# PREET HORNETT 4X4

**NEW DIMENSIONS OF PRODUCTIVITY  
WITH THE MULTI FUNCTION ABILITIES**



## PERFORMANCE DIMENSIONS

### STATIC DIMENSIONS

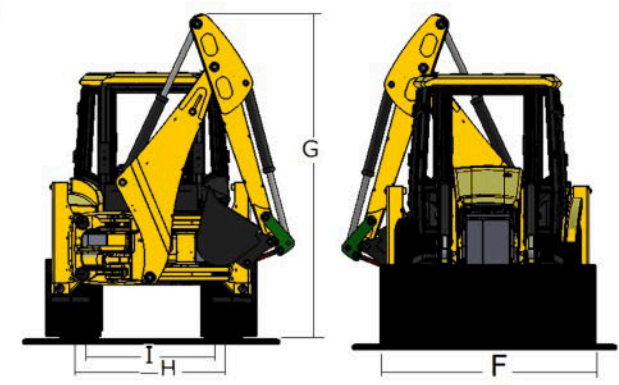
A	Overall length	6.0 m
B	Wheelbase	2.17 m
C	Min. Ground clearance	0.44 m
D	Slew ground clearance	0.65 m
E	Height to top of cab	3.30 m
F	Width over bucket	2.23 m
G	Overall height	3.65 m
H	Track width - front	1.85 m
I	Track width - rear	1.73 m
	Ar rear over hang	1.8 m
	Af front over hang	2.08 m
	Slew centre to rear axle centre	1.32 m

### EXCAVATOR DIMENSIONS

J	Reach-ground level to slew centre	5.40 m
K	King post travel	1.06 m
L	Reach-ground level to rear wheel centre	6.70 m
M	Max. Dig depth	4.70m
N	Max. Working height	5.98 m
O	Max. Load over height	4.30 m
P	Reach at full height to slew centre	2.68 m
Q	Bucket rotation	185°
	Bucket tear out force	5700 kgf
	Dipper tear out force	3010 kgf
	Lift capacity to bucekt pivot at full reach	1470 kgf
	Standard bucket capacity	0.26 cu.m
	Standard bucket width	0.79 m
	Side reach to centre line of machine	

### LOADER DIMENSION

R	Pin height	3.51 m
S	Load over height	3.33 m
T	Dump height	2.85 m
U	Reach at ground	1.40 m
V	Reach at full height-bucket dumped	0.75 m
W	Max. Reach at full height	1.10 m
X	Pin forward reach	3.53 m
Y	Dump angle	43°
Z	Rollback at ground	38°
	Shovel breakout force	5250 kgf
	Loader arm breakout force	5300 kgf
	Standard shovel	1.1 cu.m
	Payload	1800 kgf



# READY TO THRILL WITH EYE-CATCHING FEATURES



## Warranty

Preet offer warranty for Backhoe Loader 1 Year / 4000 hrs.



## Digital Cluster Meter

Show accurate readings with more reliability.



## Electrical Power

130 AH for full load lighting and better startup.



## Comfort Driver Seat

More comfort up down adjustable seat with 180 degree rotation with front and rear sliding.



## Minimum Maintenance Cost

Maintenance cost of Preet Backhoe less than others.



## Buckets

Multi-purpose clamshell buckets.



## Long Life Of Pins And Bushes

Extended life of Boom, Dipper and Loader Arm joint pins as well as bushes make machine more reliable.



## Extra Safety For Pump & Shaft

Additional plate provided in chassis bottom side to safe the Hydraulic Pump.



## Power Steering

Double acting heavy duty cylinder provide equal turning steering & quick response with minimum force.



## More Fuel Saver

Used KOEL Engine for more fuel efficient and high productivity.



## Long Life & Robust Structure

Heavy duty & robust structure make our machine more reliable.



## Smooth Gear Shift

Smooth gear shift provide operator comfort and easy to operate.



## Cab Feature

Comfort Driver Seat, Digital Cluster Meter, Cabin Fan, Front & Rear Horn/Buzzer, Water Bottle Holder, Operator instruction, Tyre pr. instruction, first aid kit & front glass wiper.



## Brakes

Hyd. actuated dual line self adjusting, Oil immersed disc type rear axle operated brakes.



## Latest Design Work Lamp

Work lamp provides loader or excavator work for better visibility.



## Internal Rear View Mirror (Cabin)

Wider rear view mirror to provide better visibility.



## Engine Temperature Information

To indicate overheat of the engine.



## Speedometer

Indicate Road Speed with accurate reading.



## GPS Tracker

Track your Backhoe Loader.



## Music System

Latest design music system with FM radio, MP 3 player with USB connectivity & Bluetooth.



## External Rear View

Large convex type rear view mirror for clear image.



## Paint

Improved Paint Quality to made machine long life.



## Tinted Glass

Tinted glass to provide better visibility in sunlight working.



## Cab Safety & Comfort

Wide range of visibility all side. Wide door opening & covered with FOP's ROP's norms.



## Machine Service

Preet Backhoe's certified engineers are there to maximise your profitability and reduce downtime.



## Turning Radius

Easy to Turn in small area & minimum space required.

# PREET HORNETT 4X4



## Engine Maintenance

Easy to open bonnet for better maintenance and service.



## Latest Design Front Axle

Heavy Duty Steer Axle, centralised pivoted with maximum Oscillation Angle.



## Trip Hour Meter (kms)

Set kilometer in you machine to keep track the kilometers.



## BEST IN CLASS CABIN WITH LARGE SPACE, EASY OPERATION

# PREET HORNETT 4X4



**Digital Cluster meter** Best in Class informative cluster with audible warning system display any malfunctioning accurate readings & better visibility

**Cluster Meter** Operation made easy with an advanced digital speedometer that display speed with clarity.

**Safety** Coolant indicator makes it easy to know coolant level, thus safeguarding engine heating

**Safety** Wider visibility & Covered with ROPS & FOPS

**Tinted Glass** Tinted cab glasses provide better visibility in day.

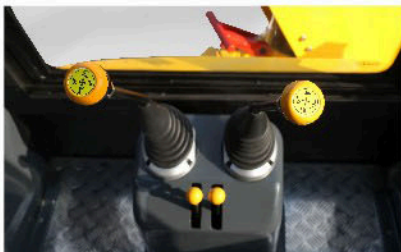
**Driver Comfort** Suspension seat with 180 Degree swivel mechanical suspension which is adjustable to separator's body weight.

**Music system** Latest design music system with FM radio, MP 3 player with USB compatibility & Bluetooth

**Additional Feature** Interior cab LED light, front screen wiper, Cabin Fan, Front & rear Horn/buzzer, water bottle holder, Operating Instructions, Tyre Pressure Instruction's.

**Rear View** Large convex type mirror for rear view

**LED lights** LED work lamps on excavator end for better night time visibility & safety of cab





## MORE CONVENIENT AND EASY TO OPERATE DIGITAL COLOUR DISPLAY PANEL



### INSTRUMENTS & CONTROLS

#### Universal Symbols

As a guide to the operation of your backhoe, various universal symbols have been utilized on the instruments and controls and at other locations of the backhoe. The symbols are shown below with an indication of their meaning.



## With World Class Product Range

-  India's No. 1 Combine Manufacturing Company

 650+ Dealer Network Nationwide + Worldwide

 Limca Book of Records holder

 Seven times National Award winner
  -  Available Tractor Range 20 HP - 100 HP

 Exporting to more than 50 Countries

 45% Market Share

 24 x 7 Service
-  1,25,650 sq. meters Manufacturing Plant



**PREET 7049**  
Maize Combine Harvester



**PREET 649**  
Tractor Mounted  
Combine Harvester



**PREET 949**  
Maize Combine Harvester



**PREET**  
949 Singham  
Combine Harvester



**PREET 4949**  
Track Combine  
Harvester



50+ Countries  
and counting  
Partnering Prosperity  
Globally

**PREET**  
9049 4WD  
with AC Cabin



**PREET**  
100 4WD



**PREET**  
Baler



**PREET**  
Rotavator



**PREET**  
Super Seeder



**PREET**  
Reaper





## **PREET AGRO INDUSTRIES PRIVATE LIMITED**

**H.O. & Plant :** Patiala Road, Nabha - 147 201 Punjab, India.

Ph.: +91-1765-220400, 222609

Email : [info@preet.co](mailto:info@preet.co) | [www.preet.co](http://www.preet.co)

**Toll Free : 1800-4190349**

