

PREET HORNETT



THE FULLY LOADED **PREET** BACKHOE LOADER
WITH THE MOST FUEL EFFICIENT PERFORMANCE.



FARMING WITH PASSION

INTRODUCING THE NEW GENERATION BACKHOE LOADER

PREET HORNETT



FEATURES & WARRANTY

New Generation Backhoe loader from Preet that embody Preet's commitment to excellence in engineering and manufacturing Powering them with powerful engine of KOEL (Kirloskar) provides world-class performance and complies with all relevant environmental regulations.

Its low fuel consumption and maintenance costs make operating the backhoe loaders even more attractive comfort and excellent visibility with tinted safety glass. The front and side control panels are all equipped with the latest technology to guide the operator. Equipped with systems to improve performance and productivity, these backhoe loader are an ideal combination of concentrated power, safety and extreme user-friendliness.

POWERED WITH UNMATCHED POWER PERFORMANCE & HIGH PRODUCTIVITY



PROVEN DESIGN & LONG LIFE STRUCTURE



PROVEN POWERTRAIN



BETTER EFFICIENCY & PRODUCTIVITY



WIDE RANGE VISIBILITY, COVERED WITH ROPS/ FOPS & COMFORT



HIGH PERFORMANCE & RELIABLE HYD. SYSTEM



FUEL SAVER WITH HIGH PERFORMANCE





SPECIFICATIONS

ENGINE

ENVIRONMENT FRIENDLY COMPLIES WITH BS-III/BS-IV & CEV NORMS, HIGH TORQUE, FUEL EFFICIENT AND LONG LIFE PERFORMANCE.

MODEL :	4R1040TC
Type	4 Stroke, Di, Turbo charged, Diesel Engine
Cylinders	4
Bore/stroke :	105 mm/120 mm
Displacement :	4160 mc
Fuel Injection	Rotary High Pressure
Fuel :	Diesel
Fuel Filter	0.8 Lit. Single Bowl Spin-on Filter, Moisture Separator
Cooling :	Liquid With 6.5± 0.5 Ltrs, Capacity Rated Speed, 2200 Rpm
Engine Speed	Low Idle 800 +/- Rpm High Idle Speed -2400 +/- 50
Horsepower @ 2200 Rpm	Gross 76 Hp (56 kw)
Max Torque @ 1500 Rpm	300 Nm ±5% @1500±100 Rpm (gross)
Radiator :	Core Size are 3972 cm ²
Water Pump Style :	Integral
Pump Operating Angle Ratings :	Side-to-side Rated 35°
Oil Filtration :	Replaceable, Full- Flow Spin- On:

POWER TRAIN

TRANSMISSION (STANDARD) Carraro Transmission With Synchro Shuttle & Different Gear Options With 4 Speed (4 Forward & 4 Reverse).4F-4R Manual Power shift Transmission, Electrically actuated with twist grip.

	1st	2nd	3rd	4th
Gear Ratios	F - 5.603 R - 4.642	F - 3.481 R - 4.201	F - 1.585 R - 1.913	F - 0.793 R - 0.957

AXLE

Front Axle	Steer Axle, Centrally Pivoted, With Oscillation Angle 16°
Rear Axle	Rigidly Mounted, Incorporates Carraro Max Torque Proportioning Differential, Driven By short propeller Shaft from gear Box.

BRAKE

Service Type :	Brake with hyd. Actuated, dual line oil immersed multi Disc type wet brakes on the rear axle operated & two Independently operate able foot pedals, joined together For normal operation.
Parking Type :	Axle mounted spring applied Hydraulic release (sahr)

ELECTRICAL

Battery	12 volts/130 ah with full road Lighting, horn & reverse alarm, water & dust proof electrical connection.
Alternator Output	95 amp

HYDRAULICS

Type	Open center hydraulics
Pump type	Tendom pump
Maximum Pump Capacity	56 cc (121 ltrs @2200 rpm)
System Pressure	220 bar

STEERING

Type	Front Wheel Steering with Power Track Steering Rod System provides equal terms steering and quick response
Make	Danfoss / Ognibene

TURNING CIRCLE

Out side front wheels (mtr) (without brake)	8.5 mtr.
Outside widest loader bucket (mtr) (without brake)	11.8 mtr.
Outside front wheels (mtr) (with brake)	6.3 mtr.
Outside widest loader bucket (mtr) (with brake)	9.2 mtr.

TYRE

Standard (Traction/ Industrial) Optional (Heavy Duty/HD)	
Front	9 x 16 -16 PR
Rear	16.9 x 28 -12 PR / 14 X 25 -20 PR/ 12 PR

SHIPPING WEIGHT

Weight	7845 kgs
--------	----------

FUEL SAVER WITH EXTRA POWER EVER

SPEED

Gear	Forward km/hr	Reverse km/hr
1st	4.5	4.5
2nd	7	7
3rd	15	Not Recommended
4th	32	Not Recommended

(Above is with standard tyres)

SERVICE

Hydraulic system (oil)	125 ltrs
Fuel tank	150 ltrs
Engine coolant	16 ltrs
Engine oil	11.5 ltrs
Transmission	17.5 ltrs
Rear axle	19 ltrs

CABIN

Ergonomically designs cabin with contemporary styling. Tinted cab glasses provide better visibility and sun protection day & night time visibility, rear view mirror. Led work lamp on excavator end for better night time visibility and safety cab provide easy walk through with two door access. Features include like: fully adjustable premium operator seat with safety belt, large convex rear view mirror in the cabin, interior light, front screen wiper, cabin fan, front & rear horn, water bottle holder. Music system MP 3 with blue tooth.

OPTIONAL FEATURES

Tele matic GPS system (global positioning system)
Hydraulic rock breaker piping
Heavy duty tyres

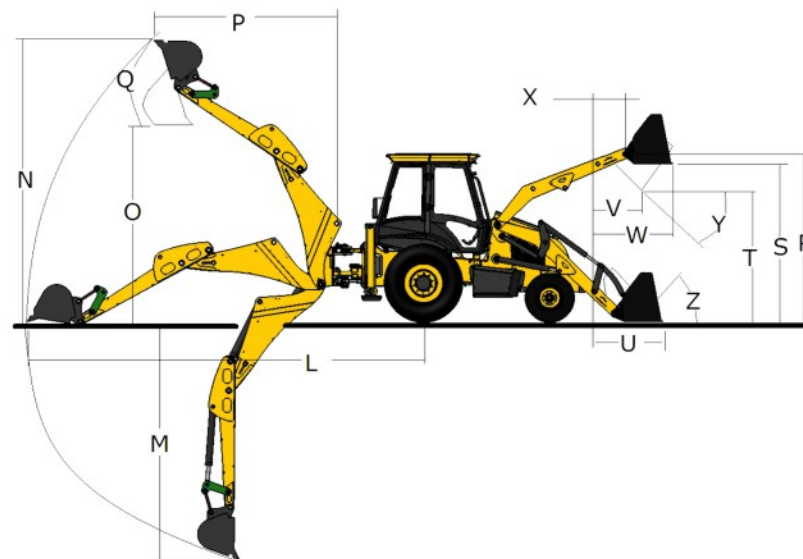
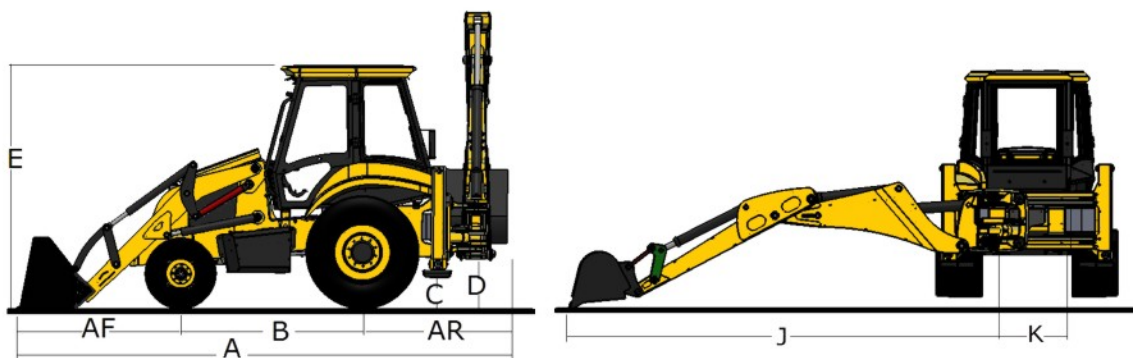
OPTIONAL ATTACHMENTS

6 in1 loader bucket	6 in 1Bucket with 1.1 cu.m Capacity
Excavator bucket with capacity	0.09, 0.12, 0.18, 0.30 cu.m
Cabin	Air conditioner cabin

*Preet makes continuous improvements to all its products & reserved the right to change specification without any notice. Photo and illustrations may contain standard and optional equipment.

PREET HORNETT

**NEW DIMENSIONS OF PRODUCTIVITY
WITH THE MULTI FUNCTION ABILITIES**



PERFORMANCE DIMENSIONS

STATIC DIMENSIONS

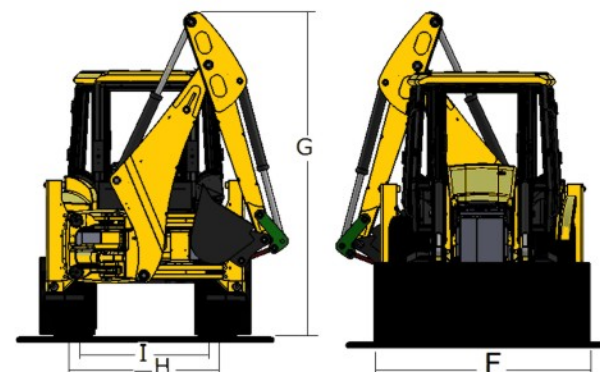
A	Overall length	6.0 m
B	Wheelbase	2.17 m
C	Min. Ground clearance	0.44 m
D	Slew ground clearance	0.65 m
E	Height to top of cab	3.30 m
F	Width over bucket	2.23 m
G	Overall height	3.65 m
H	Track width - front	1.85 m
I	Track width - rear	1.73 m
	Ar rear over hang	1.8 m
	Af front over hang	2.08 m
	Slew centre to rear axle centre	1.32 m

EXCAVATOR DIMENSIONS

J	Reach-ground level to slew centre	5.40 m
K	King post travel	1.06 m
L	Reach-ground level to rear wheel centre	6.70 m
M	Max. Dig depth	4.70m
N	Max. Working height	5.98 m
O	Max. Load over height	4.30 m
P	Reach at full height to slew centre	2.68 m
Q	Bucket rotation	185°
	Bucket tear out force	5700 kgf
	Dipper tear out force	3010 kgf
	Lift capacity to bucket pivot at full reach	1470 kgf
	Standard bucket capacity	0.26 cu.m
	Standard bucket width	0.79 m
	Side reach to centre line of machine	

LOADER DIMENSION

R	Pin height	3.51 m
S	Load over height	3.33 m
T	Dump height	2.85 m
U	Reach at ground	1.40 m
V	Reach at full height-bucket dumped	0.75 m
W	Max. Reach at full height	1.10 m
X	Pin forward reach	3.53 m
Y	Dump angle	43°
Z	Rollback at ground	38°
	Shovel breakout force	5250 kgf
	Loader arm breakout force	5300 kgf
	Standard shovel	1.1 cu.m
	Payload	1800 kgf



LEADING FUEL EFFICIENCY WITH LEGENDARY PERFORMANCE.

READY TO THRILL WITH EYE-CATCHING FEATURES



More Fuel Saver

Better efficiency & productivity, high performance, fuel saver with koel engine.



Long Life & Robust Structure

Heavy duty & robust structure make our machine to withstand against any



Smooth Gear Shift

The smooth gear shift provides the operator with comfort and ease of operation for enhanced productivity.



Cab Feature

Interior cab led light, front screen wiper, cabin fan, front & rear horn/buzzer, water bottle holder, operating instructions, tyre prs. Instructions.



Brakes

Hyd. actuated, dual line, self adjusting. Oil immersed, multi disc type on the rear axle operated through independent pedals linked together for normal use. Parking brake hand operated.



LED Lights

LED work lamps on excavator end for better night time visibility & safety of cab



Internal Rear View Mirror (Cabin)

Provides protection of the machine from any external damage.



Ambient Temperature Information

Optimise power requirement with Ambient temperature information



Digital Speedometer

Operation made easy with an advanced digital speedometer that displays speed with clarity.



GPS Enable

Tracking your machine



Music System

Latest design music system with FM radio, MP 3 player with USB compatibility & Bluetooth



Rear View

Large convex view mirror for rear view



Paint

Improved Paint Quality to make machine long life.



Tinted Glass

Tinted cab glasses provide better visibility in day & night.



Cab Safety & Comfort

Wide range of visibility covered with ROPS & FOPS and comfort with wide door opening



Machine Service

Preet backhoe loader 's certified engineers are there to maximise your profitability and reduce downtime.



Turning Radius

Easy to Turn in small area due individual braking system.



Engine Maintenance

Easy to open bonnet for maintenance and service



Latest Design Front Axle

Steer Axle, Centrally pivoted with Oscillation



Trip Hour Meter (kms)

Keep track of the distance covered



Warranty

Preet backhoe loader warranty programme that comes into effect after the machine.



New Design Fuel level

More reliable and suits all types of fuel providing in reading and longer life in various fuel condition.



Digital Cluster Meter

Accurate readings & better visibility



Electical Power

135 ah, 12 volts battery system with alternator & full road lighting.



Comfort Driver Seat

Suspension seat with 180 degree swivel mechanical suspension which is adjustable to operator's body weight.



Minimum Maintenance Cost

Minimum maintenance cost during working.



Buckets

Multi-purpose clamshell buckets

PREET HORNETT



Long Life Of Pins And Bushes

Extended life of boom and dipper joint pins as well bushes make the machine more reliable.



Power Steering

Power track steering rod system provides equal turning steering & quick response with less force



Extra Safety For Pump & Shaft

Additional plate provided in chassis for Hyd. Pump & Propeller shaft.



Additional Breather Element

Additional breather element provided on hyd tank to easy replaceable

BEST IN CLASS CABIN WITH LARGE SPACE, EASY OPERATION



PREET HORNETT

Digital Cluster meter Best in Class informative cluster with audible warning system display any malfunctioning accurate readings & better visibility

Cluster Meter Operation made easy with an advanced digital speedometer that display speed with clarity.

Safety Coolant indicator makes it easy to know coolant level, thus safeguarding engine heating

Safety Wider visibility & Covered with ROPS & FOPS

Tinted Glass Tinted cab glasses provide better visibility in day & night.

Driver Comfort Suspension seat with 180 Degree swivel mechanical suspension which is adjustable to separator's body weight.

Music system Latest design music system with FM radio, MP 3 player with USB compatibility & Bluetooth

Additional Feature Interior cab LED light, front screen wiper, Cabin Fan, Front & rear Horn/buzzer, water bottle holder, Operating Instructions, Tyre Pressure Instruction's.

Rear View Large convex type mirror for rear view

LED lights LED work lamps on excavator end for better night time visibility & safety of cab



MORE CONVENIENT EASY TO OPERATE DIGITAL COLOUR DISPLAY PANEL



INSTRUMENTS & CONTROLS

Universal Symbols

As a guide to the operation of your backhoe, various universal symbols have been utilized on the instruments and controls and at other locations of the backhoe. The symbols are shown below with an indication of their meaning.



With World Class Product Range

-  India's No. 1 Combine Manufacturing Company

 650+ Dealer Network Nationwide + Worldwide

 Limca Book of Records holder

 Seven times National Award winner
 -  Available Tractor Range 20 HP - 100 HP

 Exporting to more than 50 Countries

 45% Market Share

 24 x 7 Service
-  1,25,650 sq. meters Manufacturing Plant



PREET 849
DLX Mini
Combine Harvester



PREET 7049
Maize Combine Harvester



PREET 949
Track Combine Harvester
(Tangential Axial Flow)



PREET
949 Singham
Combine Harvester



PREET 4949
Track Combine
Harvester



PREET 649
Tractor Mounted
Combine Harvester



50+ Countries
and counting
Partnering Prosperity
Globally

PREET
9049 4WD
with AC Cabin



PREET
100 4WD



PREET
Baler



PREET
Rotavator



PREET
Super Seeder



PREET
Reaper





***PREET* AGRO INDUSTRIES PRIVATE LIMITED**

H.O. & Plant : Patiala Road, Nabha - 147 201 Punjab, India.

Ph.: +91-1765-220400, 222609

Email : info@preet.co | www.preet.co

Toll Free : 1800-4190349

